

Beef Quality Assurance (BQA) In-Person Certification

JANUARY 29

SHAWANO

Shawano Library

128 S Sawyer Street

(Maximum of 30 Participants)

Program Begins at 1:00 PM

Registration Opens 12:30 PM

FEBRUARY 13

FLORENCE

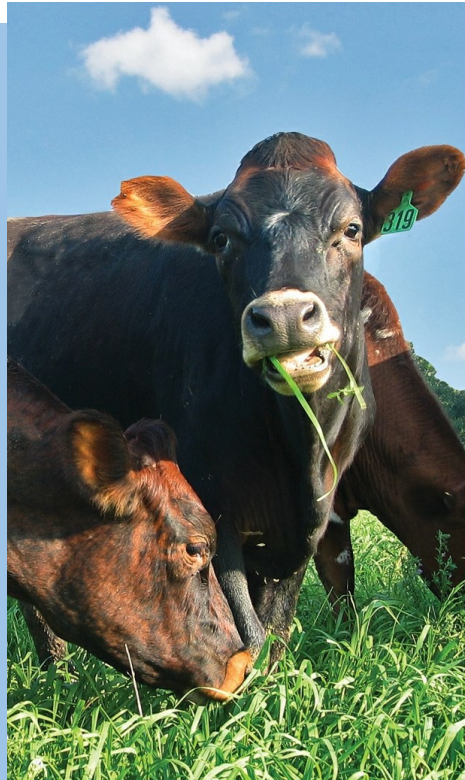
Natural Resource Center

Conference Room

5628 Forestry Drive

Program Begins at 10:30 AM

Registration Opens 10:00 AM



JANUARY 30

BIRNAMWOOD

Matsche Center

326 Railroad Street

(Maximum of 30 Participants)

Program Begins at 1:00 PM

Registration Opens 12:30 PM

FEBRUARY 16

GILLETT

Community Center

204 E Main Street

Program Begins at 1:00 PM

Registration Opens 12:30 PM

**Certification Includes:
Training, Materials
and Exam**

Cost: \$15/FARM

**Checks Payable to:
WI BQA Program**

**Register by Phone—
One Week Prior to
Certification Date:
UW-Extension
Oconto County
(920) 834-6845**

Why become BQA certified?

Beef Quality Assurance is a national program that raises consumer confidence by offering training in proper management techniques with a commitment to quality within every segment of the beef industry.

Effective January 1, 2019, several large packers and processors will only purchase from BQA or National FARM certified farms. Buyers and stockyards will be confirming compliance at the point of sale. Beef Quality Assurance (BQA) Certification also available online at bqa.org.

For more information, please contact Sarah Mills-Lloyd, UWEX Agriculture Agent, at (920) 834-6845 or sarah.millsloyd@uwex.edu

Information for Dairy Farms

Most dairy farms are already BQA certified with their completion of the National FARM program with their dairy processor. BQA equivalency documents for dairy farms include:

- Completed FARM Animal Care Version 3.0 or newer
- FARM Program supplied letter from cooperative or processor indicating completion of Version 3.0 or newer
- Signed Livestock Marketing Association (LMA) affidavit

